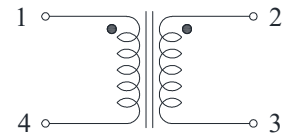
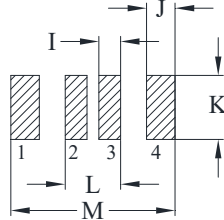
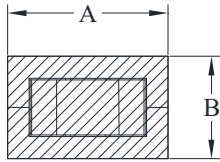


CYNTEC CO., LTD.

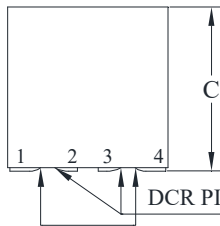
乾坤科技股份有限公司

DELTA P/N : TLM966411F Series

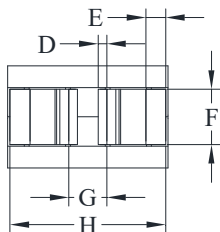
Mechanical Dimensions & Schematic



Schematic



DCR PIN 1-4 Measure Points



Suggested PWB Layout

- UNIT : mm
 A = 9.60 MAX
 B = 6.40 MAX
 C = 10.50 MAX
 D = 0.50
 E = 1.15
 F = 3.20
 G = 2.20
 H = 9.00
 I = 1.25
 J = 1.65
 K = 3.70
 L = 3.20
 M = 9.50



Electrical Characteristics @ 25°C, 100kHz, 1V

| Delta P/N | L (nH) ± 15% | Li (nH) MIN | DCR (mΩ) ± 10% | | Isat ¹ (A) | | | Ir ² (A) | |
|----------------|--------------------|-------------------|----------------------|------|--------------------------|-------|-------|------------------------|-----|
| | | | 1-4 | 2-3 | 25°C | 100°C | 125°C | 1-4 | 2-3 |
| TLM966411F-101 | 100 | 64 | 0.125 | 0.33 | 98 | 83 | 78 | 75 | 47 |
| TLM966411F-121 | 120 | 77 | | | 79 | 67 | 63 | | |
| TLM966411F-151 | 150 | 96 | | | 62 | 53 | 49 | | |
| TLM966411F-181 | 180 | 115 | | | 54 | 46 | 43 | | |

1. Isat is the DC current which causes the inductance drop to Li.
2. Ir is the DC current which causes the surface temperature of the part increase approximately 40 °C.
3. Operating temperature: -40°C to 125°C (Self-temperature rise included).